



Program Related Work Experience and Academic Success for Indigenous Post-Secondary Learners

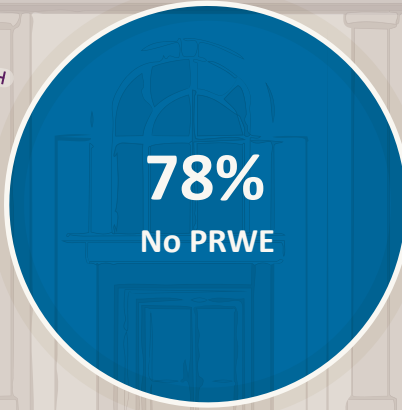
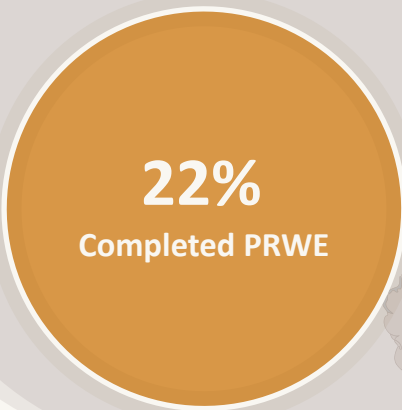
The study aims to identify the relationship between student involvement in **program-related work experience (PRWE)** and employment outcomes, as well as annual income and employment satisfaction for those students who are employed at time of data capture.

Data collected from the 2020 *Building Brighter Futures: Bursaries, Awards, and Scholarships (BBF)* survey findings reflect 2,247 BBF recipients who had completed their post-secondary program.



KEY TAKEAWAYS

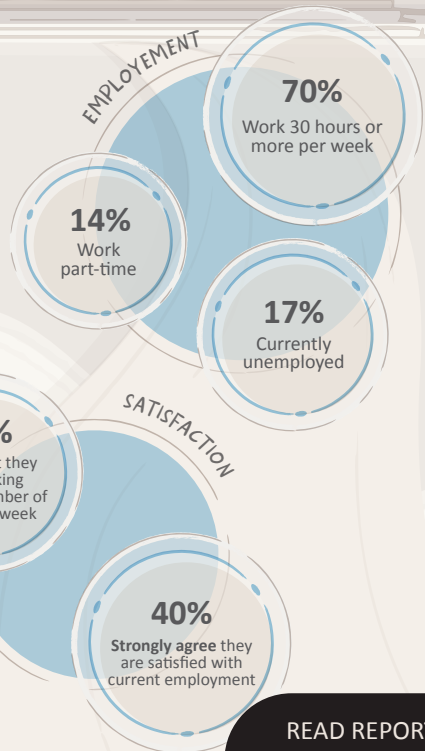
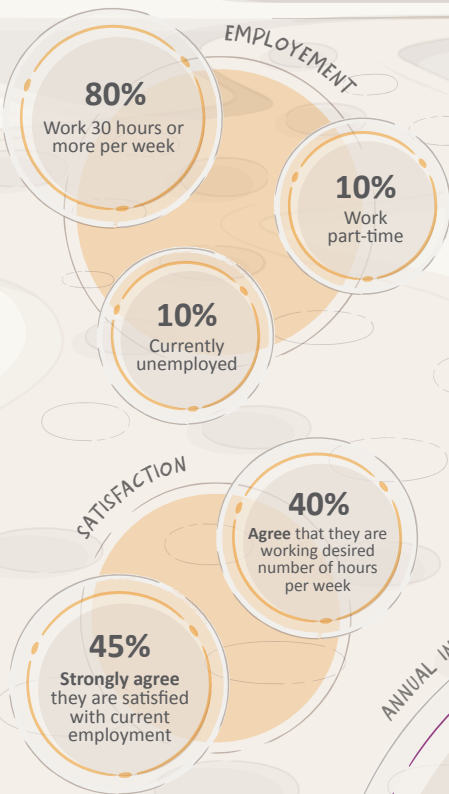
- Hands-on experience from PRWE appears to have a beneficial effect on post-graduate outcomes in employment and employment satisfaction.
- Further studies would benefit from the inclusion of additional, more specific criteria (e.g., fields of study, geographic area, and sectors of employment).



Those with **no PRWE** more likely to report working part-time or unemployed than those with PRWE



ENTERING WORKFORCE



ANNUAL INCOME

Similarities between both, however students with PRWE were more likely to make between \$60,000 and \$69,999 per year (20 percent) than those with no PRWE (13 percent)

READ REPORT

