



Indspire

Indigenous education, Canada's future. | L'éducation des autochtones, L'avenir du Canada.

Creating Positive Outcomes: Graduation and Employment Rates of Indspire's Financial Award Recipients

This report outlines key research findings related to graduation rates of Building Brighter Futures (BBF) recipients, employment rates of BBF graduates, and reciprocity of BBF graduates (i.e. if they are employed, do they serve Indigenous populations through their work) from 2000-2001 and 2012-2013.

RESULTS OF THE STUDY – BBF RECIPIENT STUDENT VOICES



Employment Rates

82% of graduates were employed, and of employed graduates, employment in field of study was high.



Serving Indigenous Populations

84% of graduates report working within an Indigenous community. Motives included addressing systemic barriers, such as racism and discrimination, in mainstream institutions.



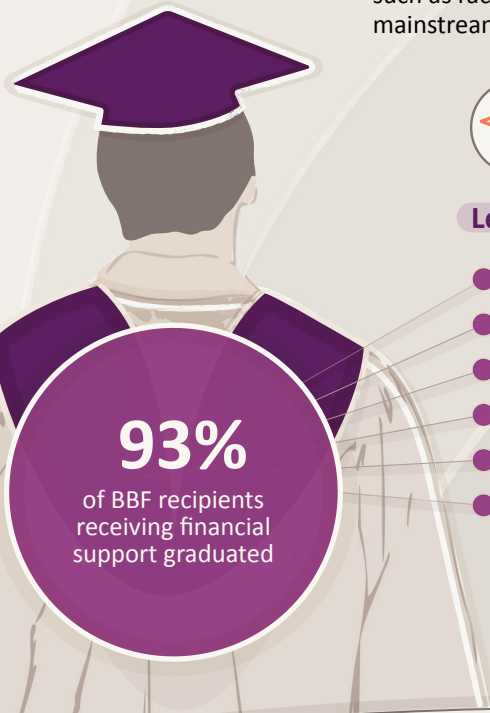
Health Careers

Among graduates in health-related fields, **88%** were employed. Of those, **80%** were serving Indigenous populations, and **93%** said their education was relevant to and prepared them for their current employment.



Level of Education Completed

- 50% undergraduate degree
- 22% graduate degree
- 15% college diploma
- 8% professional designation
- 3% high school diploma
- 2% institutional certification



93%
of BBF recipients receiving financial support graduated

"I was fortunate to receive 3 bursary awards from Indspire during my time in school. One of these awards included the opportunity to intern with a mainstream media outlet. This experience led to gaining full-time employment with APTN as a video journalist in Thunder Bay. Meegwetch, Indspire and sponsors for the support in this chapter of my journey."

– BBF Recipient



KEY TAKEAWAYS

- BBF recipients move through post-secondary education (PSE) into meaningful employment, and many are using that education to serve Indigenous populations.
- Financial support remains a critical part of Indigenous educational success.



RECOMMENDATIONS

- A follow-up study should be done to determine whether the remaining funded students in the study who were still in school have since gone on to graduate.
- Qualitative data from students who did not graduate would also help deepen understanding of areas of growth and struggle in post-secondary education.

READ REPORT

